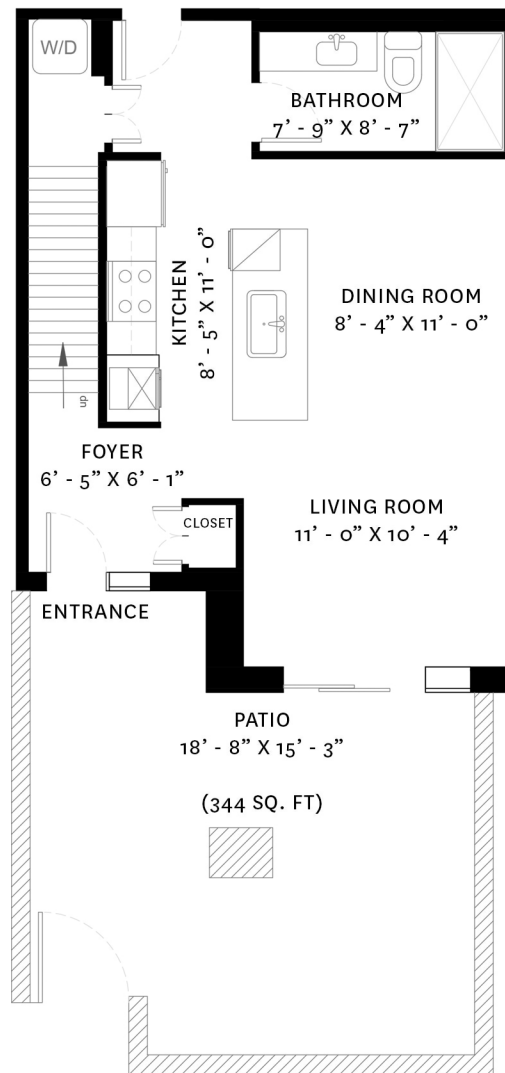


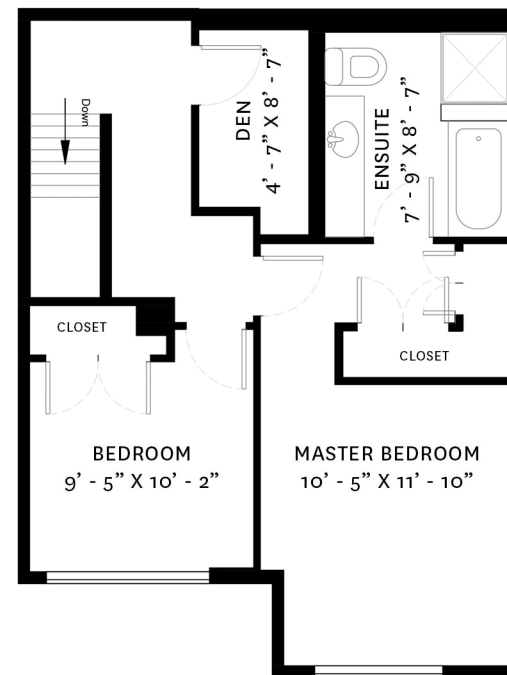
105 1688 PULLMAN PORTER STREET, VANCOUVER, BC

MAIN FLOOR TOTAL: 576 SQ. FT
 UPPER FLOOR TOTAL: 558 SQ. FT
 TOTAL: 1134 SQ. FT

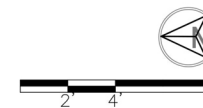
PATIO: 344 SQ. FT



MAIN FLOOR PLAN
 Ceiling Height: 8'-5"



UPPER FLOOR PLAN
 Ceiling Height: 8' - 6"



floor plan designed by ishot.ca Enterprises Inc.
 604.368.7979 ishot.ca

Derek Kai PREC*
 604.868.1666
 dkai@rennie.com
 rennie.com/derekkai

Tracy Lam
 778.688.8035
 tlam@rennie.com
 rennie.com/tracylam

rennie

*PERSONAL REAL ESTATE CORPORATION. THE FLOOR PLAN ILLUSTRATION IS NOT SUITABLE FOR CONSTRUCTION/ARCHITECTURAL PURPOSES. MEASUREMENTS ARE APPROXIMATE AND MAY NOT BE TO SCALE. E&O INSURED.