

FOR SALE & for living

WALL CENTRE CENTRAL PARK
#512- 5470 Ormidale Street
Vancouver



#512- 5470 Ormidale Street Vancouver

Welcome to Wall Centre Central Park Tower 3 (The FINAL TOWER) – BRAND NEW North facing 1BR suite w/ HUGE DEN & FLEX. Spacious bedroom, open design kitchen, balcony overlooking peekaboo mountain views, and GST PAID! Designed to meet LEED Gold Standards by award-winning GBL Architects featuring floor to ceiling windows, cocoa wood-tone laminate floors, shaker-style cabinetry, quartz/marble counters & stainless steel appliances (gas range). World Class Amenities include: visitors parking, fitness center, party room, meeting rooms, caretaker & rooftop garden plots. ONE PARKING STALL INCLUDED! CONVENIENTLY LOCATED just minutes from transit, parks and shopping/dining. ALL THAT'S MISSING IS YOU!

INFORMATION YOU NEED TO KNOW:

PRICE	\$499,900
ADDRESS	#512- 5470 Ormidale Street. Vancouver
AREA	Collingwood
TYPE	1 Bedroom plus EB & Flex (Dark colour scheme)
BATHS	1
SQ FT	544
STRATA FEES	\$249.65
PARKING	1 (PH1-P4-46)
STORAGE	Insuite
YEAR BUILT	2018
VIEW	North
PETS	Yes - 1 Dog or 2 Cats or 1 of each
RENTALS	Yes

INFORMATION YOU **want** TO KNOW:



Transit

0.0 km



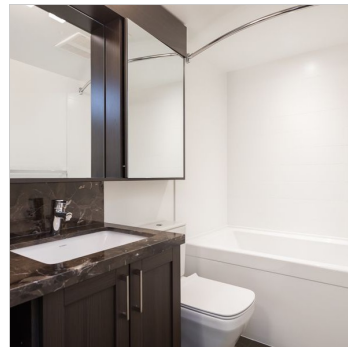
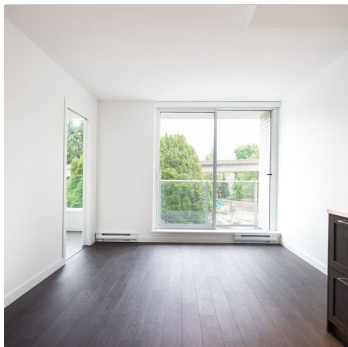
Nearest Park
Central Park



Schools nearby:
Graham D. Bruce
Elementary



Coffee shops within 1 km:
12



DEREK KAI *PREC

604.868.1666 · dkai@rennie.com

Expertliving.ca

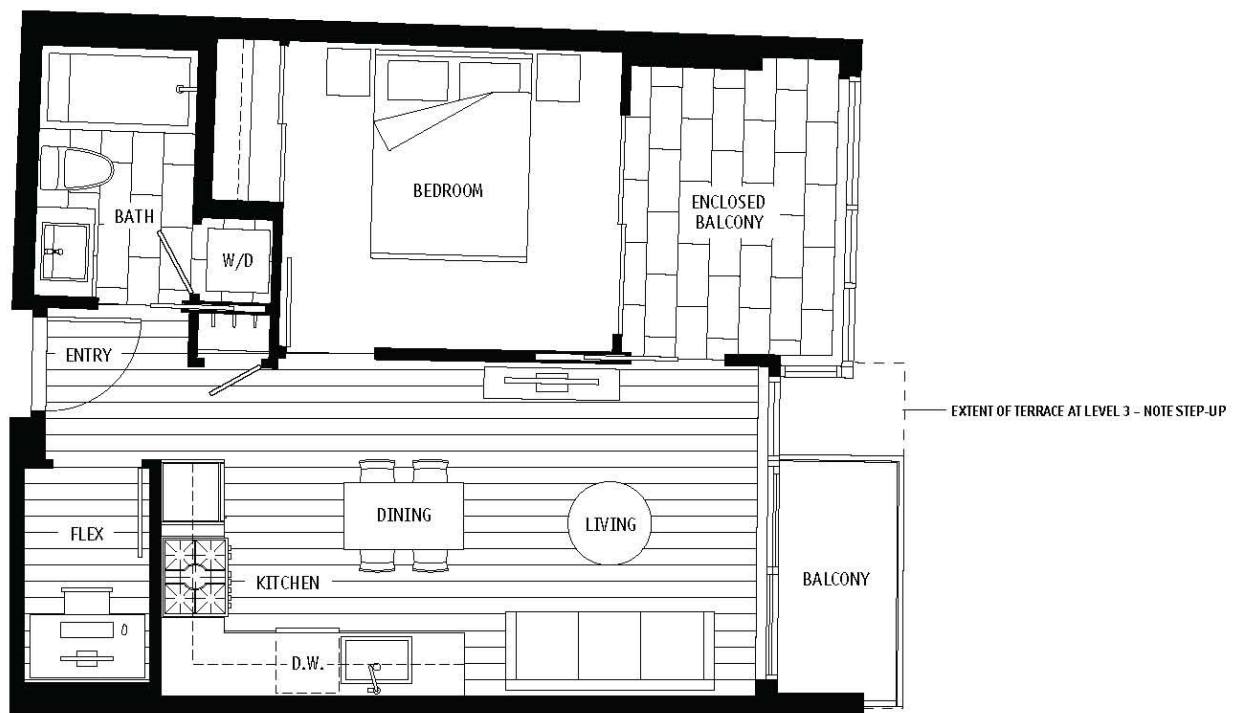
SUSAN CHOW *PREC

604.765.8269 · schow@rennie.com

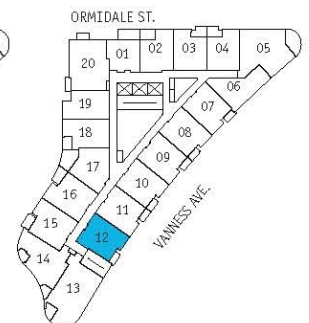
Expertliving.ca

rennie.com

RENNIE
&
ASSOCIATES
REALTY



LEVEL 3



LEVELS 5-10