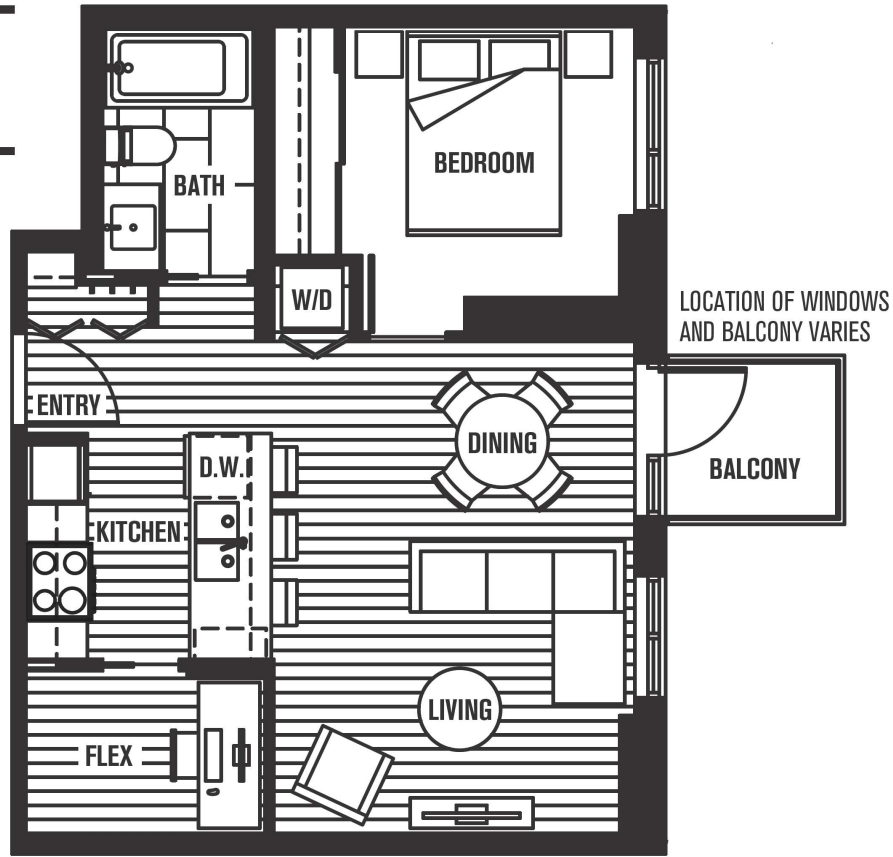


# theBallantyne

@ Strathcona Village

**PLAN B**  
1 BEDROOM + FLEX  
546 SQ FT



HASTINGS ST.

**9TH FLOOR**  
ALSO AVAILABLE ON LEVELS 10, 11 & PH



HASTINGS ST.

**8TH FLOOR**



Dimensions, sizes, areas, specifications, layouts and materials are approximate only and subject to change without notice. E.&O.E.