

114 - 2478 Shaughnessy Street, Port Coquitlam

\$469,900



Welcome to Shaughnessy East - Conveniently located in the heart of the thriving & vibrant Downtown Port Coquitlam. This 2 bedroom 2 bathroom ground floor home has a Townhouse feel with 2 entrances, over height ceilings & a HUGE patio/fenced yard perfect for the family, pets & Summer BBQ's. Perfectly laid out open floor plan with bedrooms on either side of living room, modern stainless steel appliances, granite counters with a peninsula breakfast bar. Living room has large windows allowing plenty of natural light & a gas fireplace for winter nights. Well maintained building with proactive strata. Amenities include a guest suite, exercise room and recreation room. Perfect location steps away from shopping, restaurants, coffee shops, library, recreation centre, Leigh Square & West Coast Express. **BONUS:** Upgraded full size washer & dryer, 2 parking stalls & storage locker included.

KEY INFORMATION

PRICE: \$469,900

Address: #114 - 2478 Shaughnessy Street

AREA: Central Port Coquitlam

TYPE: 2 Bedroom + 2 Bathroom + Patio

SQ FT: 970 + 193 SF Patio

YEAR BUILT: 2006

FEATURES

VIEWS: West - Garden View

PARKING: 2 (#30 & 31)

STORAGE: Underground S-21

PETS: 2 Dogs or 2 Cats or 1 of Each

TAX: \$1,650.59 (2017)

MLS: R2378686

ELEMENTARY: Central Community Elementary

HIGH SCHOOL: Riverside Secondary



Derek Kai PREC*
604.868.1666
dkai@rennie.com
rennie.com/derekkai

rennie

Derek Kai

604.868.1666 dkai@rennie.com

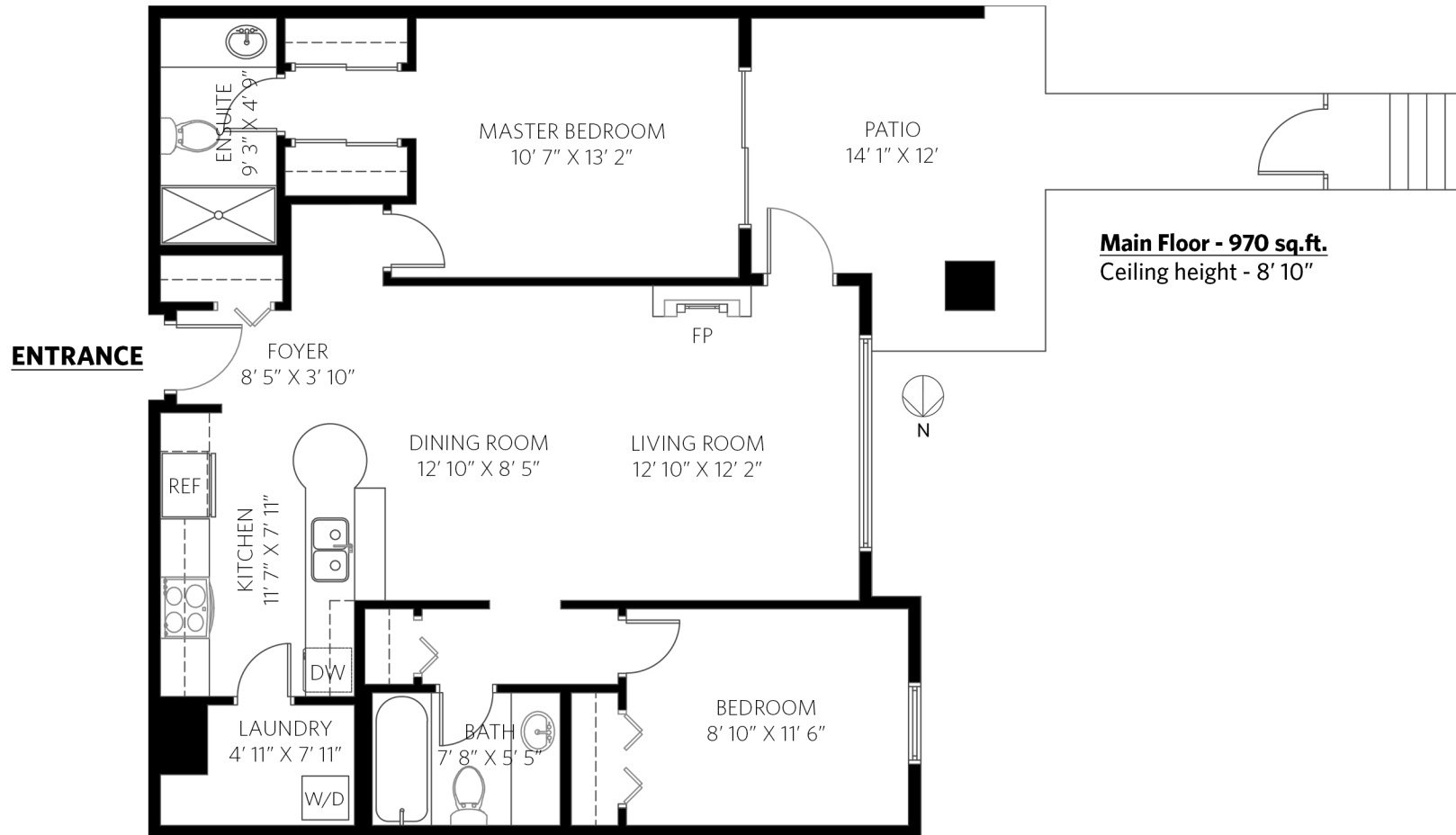
www.expertliving.ca

#114-2478 Shaughnessy Street, Port Coquitlam

2 bedrooms + 2 bathrooms

Total Interior: 970 sq.ft.

Patio: 193 sq.ft.



rennie

www.OPTIMUMFLOORPLANS.com 2D & 3D Floor Plans 604-729-5033

OPTIMUM
FLOOR PLAN DESIGNS

Floor plan measurements, dimensions, square footage, existing structures & features are approximations and for illustrative purposes only. We make no guarantee, warranty or representation, expressed or implied, as to the accuracy and completeness of this rendering. Independent verification is recommended. E&O Insured for \$1,000,000