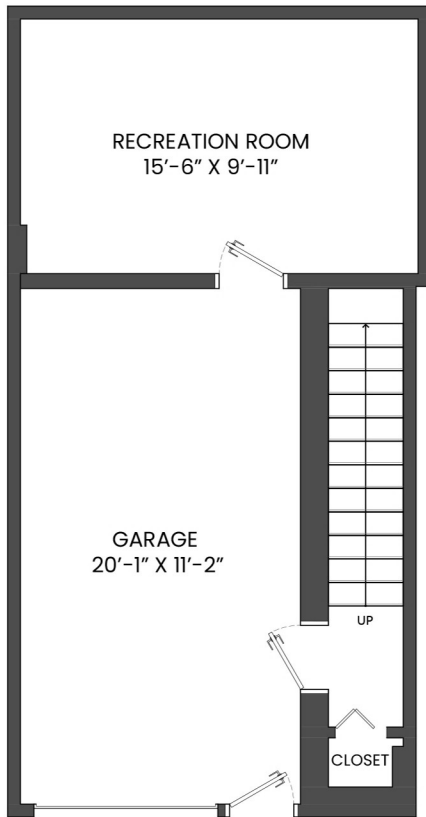


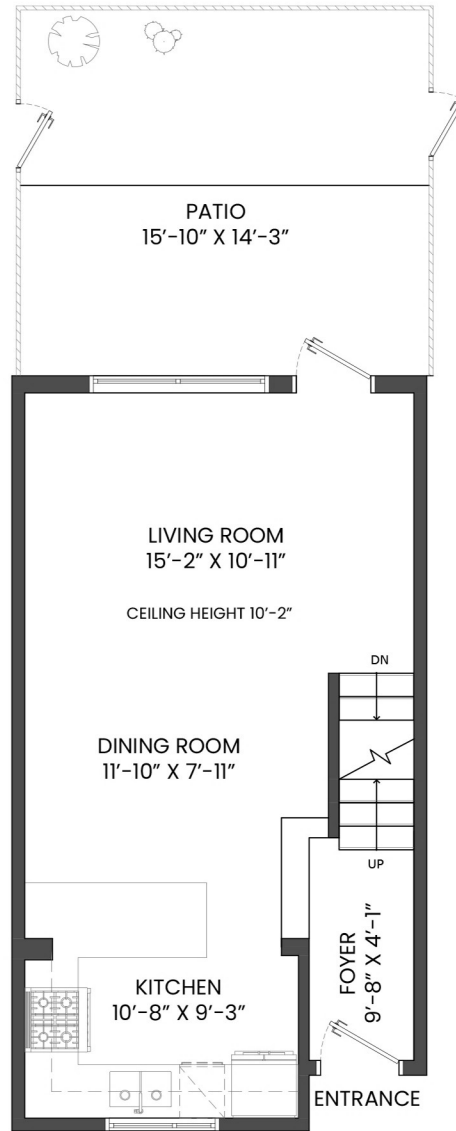
# 755 WEST 42ND AVENUE, VANCOUVER, BC

LOWER FLOOR TOTAL: 89 SQ.FT. GARAGE: 247 SQ. FT.  
 MAIN FLOOR TOTAL: 487 SQ.FT. PATIO: 225 SQ. FT.  
 UPPER FLOOR TOTAL: 513 SQ.FT.  
 TOP FLOOR TOTAL: 335 SQ.FT.  
**TOTAL: 1,424 SQ.FT.**  
 RECREATION ROOM: 176 SQ.FT.  
**GRAND TOTAL: 1,600 SQ.FT.**

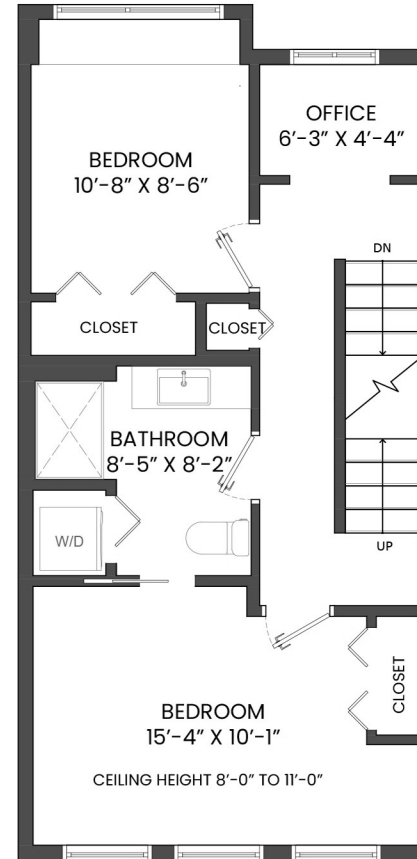
\*DISCLAIMER: STRATA PLAN SHOWS 1,335 SQ.FT,



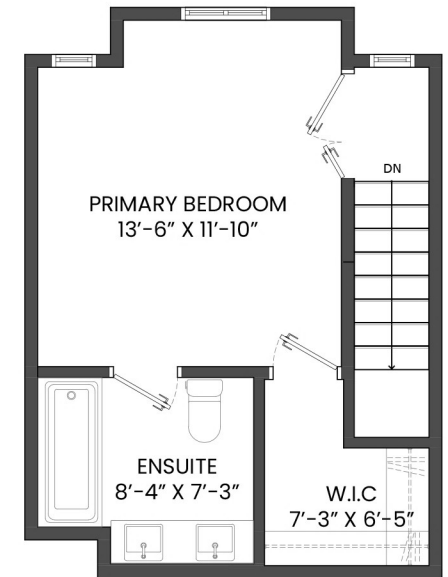
**LOWER FLOOR PLAN**  
 Ceiling Height: 8'-2"



**MAIN FLOOR PLAN**  
 Ceiling Height: 10'-2"



**UPPER FLOOR PLAN**  
 Ceiling Height: 8'-0"



**TOP FLOOR PLAN**  
 Ceiling Height: 8'-0"

