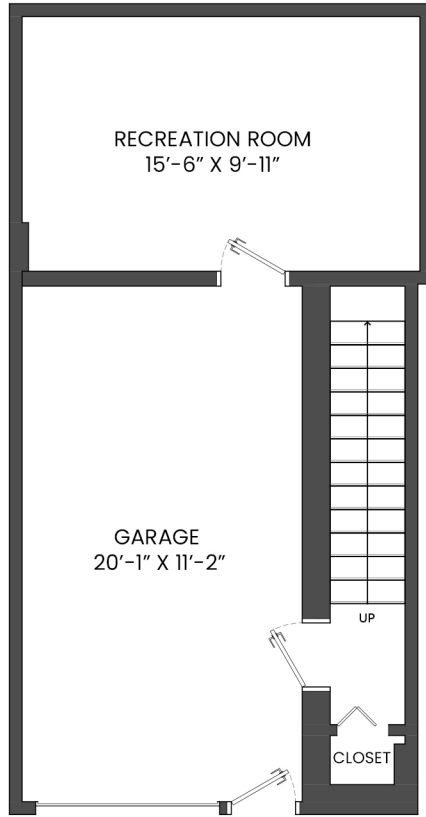


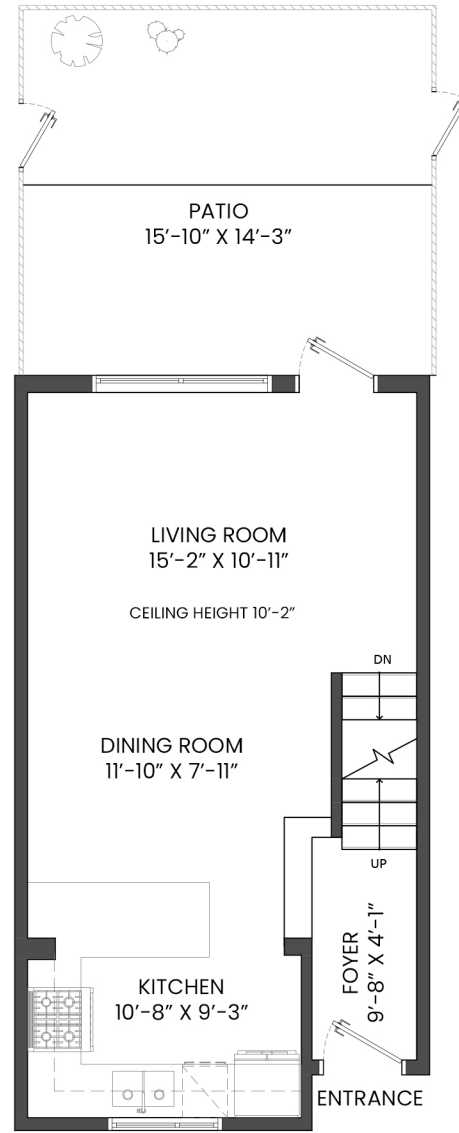
# 755 WEST 42ND AVENUE, VANCOUVER, BC

LOWER FLOOR TOTAL: 89 SQ.FT. GARAGE: 247 SQ. FT.  
 MAIN FLOOR TOTAL: 487 SQ.FT. PATIO: 225 SQ. FT.  
 UPPER FLOOR TOTAL: 513 SQ.FT.  
 TOP FLOOR TOTAL: 335 SQ.FT.  
**TOTAL: 1,424 SQ.FT.**  
 RECREATION ROOM: 176 SQ.FT.  
**GRAND TOTAL: 1,600 SQ.FT.**

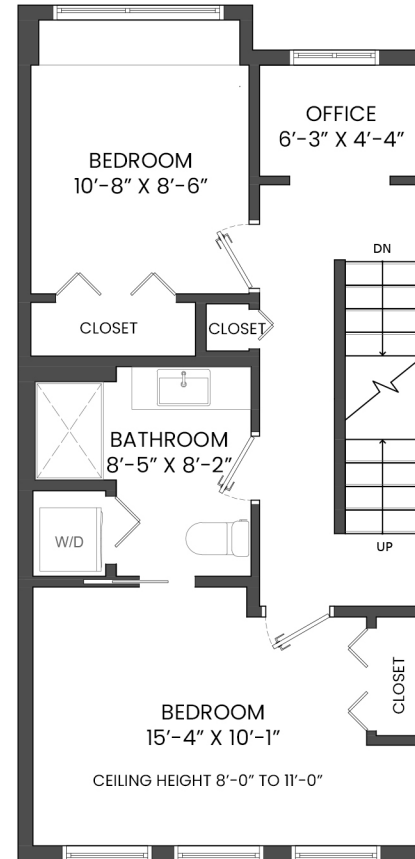
\*DISCLAIMER: STRATA PLAN SHOWS 1,335 SQ,FT,



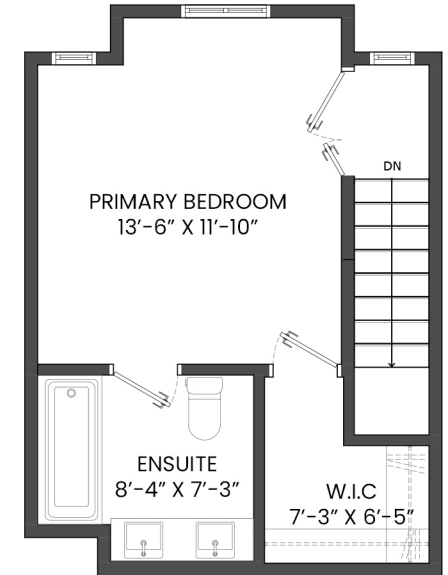
**LOWER FLOOR PLAN**  
Ceiling Height: 8'-2"



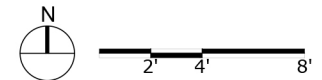
**MAIN FLOOR PLAN**  
Ceiling Height: 9'-0"



**UPPER FLOOR PLAN**  
Ceiling Height: 8'-0"



**TOP FLOOR PLAN**  
Ceiling Height: 8'-0"



**Derek Kai** PREC\*

604.868.1666

dkai@rennie.com

expertliving.ca

\* PERSONAL REAL ESTATE CORPORATION. THE FLOOR PLAN ILLUSTRATION IS NOT SUITABLE FOR CONSTRUCTION/ ARCHITECTURAL PURPOSES. MEASUREMENTS ARE APPROXIMATE AND MAY NOT BE TO SCALE. E&O INSURED.  
 FLOOR PLAN DESIGNED BY ISHOT.CA ENTERPRISES INC. 604-368-7979 ISHOT.CA

**rennie**

ISHOT